



*Derby Music Centre*

# *Gala Concert*

Saturday 23rd March 2024

2:30pm

**Compere Bex Maiden**

The Reach Centre,  
Riverside Court Pride Park, Derby, DE24 8HY

Supported using public funding by



**ARTS COUNCIL  
ENGLAND**

*First Half*

**Intermediate Wind Band** *conducted by Peter Glenville*

Thriller – Michael Jackson arr Robert Longfield

Highlights from the Chronicles of Narnia – Harry Gregson-Williams arr  
Jay Bocook

---

**Voices** *conducted by Joanne Harland*

Somewhere from West Side Story – Bernstein and Sondheim

Fireflies – Adam Young and Matt Thiessen

---

**Junior Strings, String Club &  
St George's String Club** *conducted by John Miller and  
Katie Shooter*

Dancing Queen – Benny Andersson, Björn Ulvaeus and Stig  
Anderson

Transylvanian Stick Dance - Trad

---

**City of Derby  
Youth Band (CDYB)** *conducted by Alan Losh*

Bohemian Rhapsody - Queen arr D.Barry

Shepherds Song - Canteloube

March Captain America arr Alan Silvestri

---



***Interval and Raffle***



Swing Band will be performing during the interval.

*Second Half*

**Intermediate Strings  
& Senior Strings**

*conducted by Vicky Keane  
and Rachel Richardson*

Por Una Cabeza - C. Gardel arr P.Martin

Allegretto from Beethoven's 7th Symphony arr Carse

---

**Swing Band**

*conducted by Ben Henderson*

Tuxedo Junction- Glenn Miller

Hey Jude - The Beatles

---

**Samba Band**

*conducted by Ben Henderson*

Maracatu - arranged by the samba group students

---

**Swing and Samba Band**

*conducted by Ben Henderson*

Iko Iko - Dixie Cups arr Ben Henderson. Featuring Emilie Kitchen

---

**Junior Wind Band  
& Wind Club**

*conducted by Conor Harron  
and Ben Henderson*

Theme from Jurassic Park - John Williams arr Michael Sweeney

Somewhere Out There - James Horner arr Michael Sweeney

Raiders March - John Williams arr Michael Sweeney

---

**City of Derby Youth  
Orchestra (CDYO)**

*conducted by Vicky Keane*

A Night on Bald Mountain - Mussorgsky

Superman Returns - Williams/Ottman arr Lopez

---

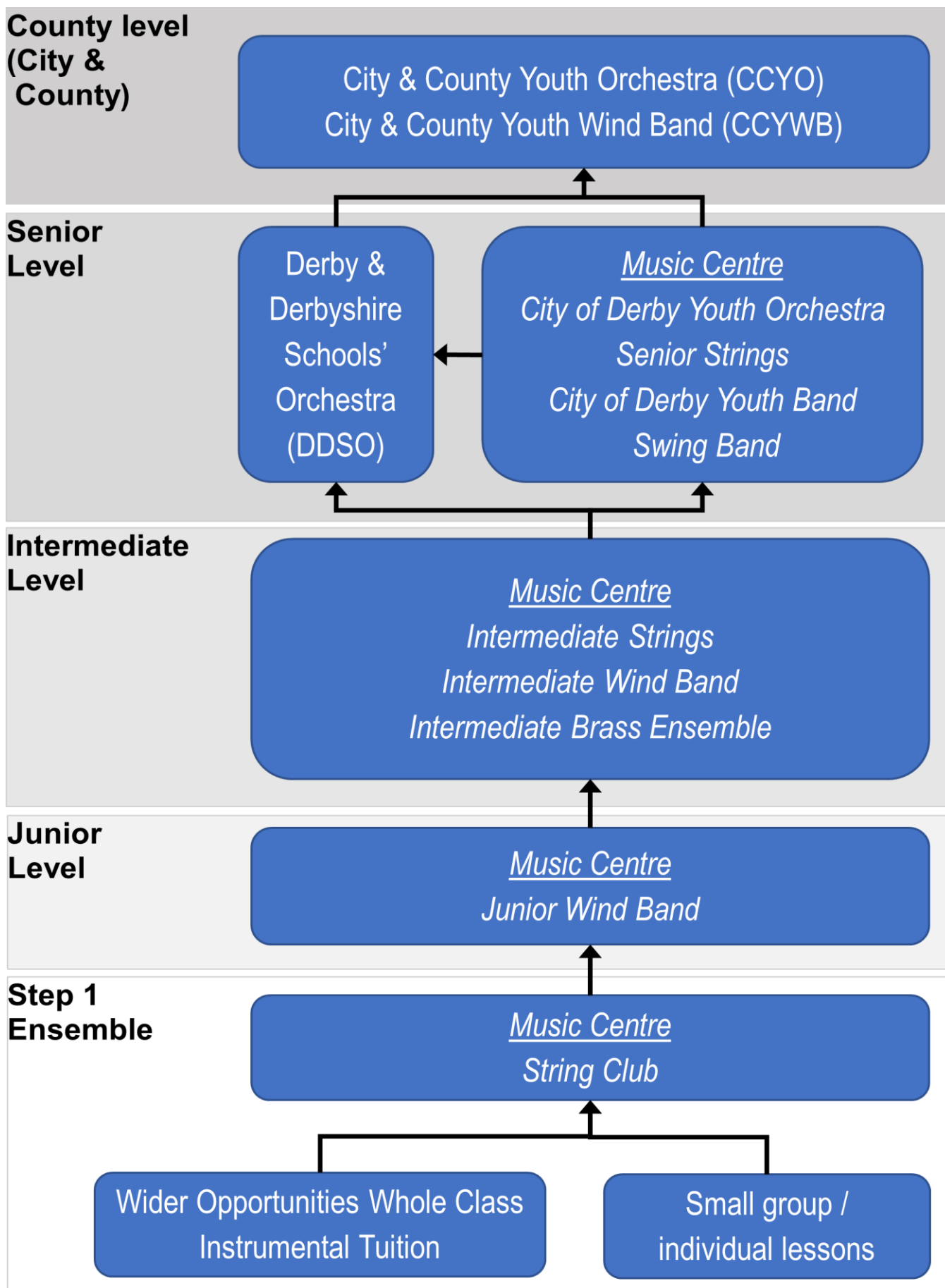
**Finale – for all players**

*conducted by Vicky Keane*

Finale of the 1812 Overture - Tchaikovsky arr Carter

# Progression Pathway: Derby Music Centre

## Derby & Derbyshire Music Partnership Ensembles



## **DMC students attend the following schools:**

Allestree Woodlands School  
Beaufort Community Primary School  
Blessed Robert Sutton Catholic Sports College  
Bradley C of E Primary School  
Cavendish Close Infant School  
Charlotte Nursery and Infant School  
Chellaston Academy  
Cherry Tree Hill Primary School  
City of Derby Academy  
Codnor Community Primary School CofE  
Controlled  
Dale Community Primary School  
Denstone College  
Derby Cathedral School  
Derby Grammar School  
Derby High School  
Derby Moor Community Sports College  
Derby UTC  
Duffield Meadows Primary School  
English Martyrs' Catholic Primary  
Eureka Primary School  
Field House Infant School  
Firs Estate Primary School  
Granville Sport College  
Griffe Field Primary School  
Hardwick Primary School  
Harrington Junior School  
Highfields School  
Hilton Primary School  
Home Schooled  
Homefields Primary School  
John Flamsteed Community School  
John Port Spencer Academy  
Landau Forte College  
Lawn Primary School  
Little Eaton Primary School  
Littleover Community School  
Markeaton Primary School  
Melbourne Junior School  
Mickleover Primary School  
Morley Primary School  
Murray Park Community School  
Nottingham Girls High School  
Parkview Primary School  
Portway Junior School  
Queen Elizabeth's Grammar School  
Repton Primary School  
Saint Benedict Catholic Voluntary Academy  
Silverhill Primary School  
St Clare's School  
St. George's Catholic Primary School  
(Littleover)  
St. Joseph's Catholic Primary School (Derby)  
St. Mary's Catholic Primary School and Nursery  
(Derby)  
St. Martin's School  
Swanwick School and Sports College  
The Curzon CofE Primary School  
The Ecclesbourne School  
Trent College  
Walter Evans CofE Aided Primary School  
West Park School  
William Gilbert Endowed CofE Primary School  
Wren Park Primary School

*We would like to thank the following organisations and businesses for their generous support:*



**DERBY CONCERT  
ORCHESTRA**



**Nottingham  
Philharmonic  
Orchestra**



A huge thank you to everyone who has donated a raffle prize.

We would also like to extend a thank you to Keirsten Tang for her photography, Stone PAT testing, and anyone else who has helped or supported this event in any capacity.

Derby Music Centre is a Hub partner with Derbyshire Music Hub. Thanks are also due to the Trustees, the conductors, all those who regularly support the Centre, and of course you, the parents, family and friends who continue to encourage and support your children.

To apply for county level ensembles, please go to [www.derbyshiremusichub.org.uk](http://www.derbyshiremusichub.org.uk) and click on: **“Becoming a member of City & County ensembles”**

We are always interested to hear your views and hope that you will take time to send an e-mail or talk to us. For further information about joining Derby Music Centre please see <https://www.derbymusiccentre.com/post/come-and-join-dmc>

**[www.derbymusiccentre.com](http://www.derbymusiccentre.com)**

**[info@derbymusiccentre.com](mailto:info@derbymusiccentre.com)**

**Facebook: [derbymusiccentre](https://www.facebook.com/derbymusiccentre)**



**[www.derbyshiremusichub.org.uk](http://www.derbyshiremusichub.org.uk)**