



Derby Music Centre

Gala Concert

Saturday 25th March 2023

2:30pm

Compere Bex Maiden

The Reach Centre,
Riverside Court Pride Park, Derby, DE24 8HY

Supported using public funding by



**ARTS COUNCIL
ENGLAND**

First Half

Intermediate Wind Band *conducted by Peter Glenville*

Gershwin Classics - arr Sweeney

George of the Jungle - arr Jay Bocook

Supercalifragelistic from Mary Poppins - arr S. O'Larghlin

Voices *conducted by Joanne Harland*

Skye boat song - Traditional

Fireflies - Andy Beck

I am the Earth - Glyn Lehmann

**Junior Strings, String Club &
St George's String Club** *conducted by John Miller and
Vicky Keane*

Country Gardens - Percy Grainger

Is this the way to Amarillo - Neil Sedaka

Samba Band *conducted by Ben Henderson*

Samba Reggae

Samba di Janeiro

**City of Derby
Youth Band (CDYB)** *conducted by Alan Losh*

Waltz Jazz Suite No. 2 Shostakovich

I Dreamed a Dream M.Schonberg

Dance like David arr. Mackereth

 **Interval and Raffle** 

Second Half

**Intermediate Strings
& Senior Strings**

*conducted by Vicky Keane
and Rachel Richardson*

Basse Danse, Pavane and Mattachins
(from the Capriol Suite) – Peter Warlock

Flop-eared mule – Trad. / arr. Dabcynski

Rumanian Folk Dances no. VI and VII – Bartok/ arr. Arthur Willner

Swing Band

conducted by Ben Henderson

The Fool on the Hill - The Beatles

A Space Oddity - David Bowie

Chameleon - Herbie Hancock

**Junior Wind Band
& Wind Club**

*conducted by Conor Harron
and Ben Henderson*

The Rainbow Connection - Paul Williams and Kenneth Ascher arr.
John Moss

You'll be in My Heart - Phil Collins arr. John Moss

Zorro's Theme - James Horner arr. John Moss

**City of Derby Youth
Orchestra (CDYO)**

conducted by Vicky Keane

How to Train a Dragon – John Powell (arr. Sean O'Loughlin)

Mars: The Bringer of War –Holst (arr. Richard Ling)

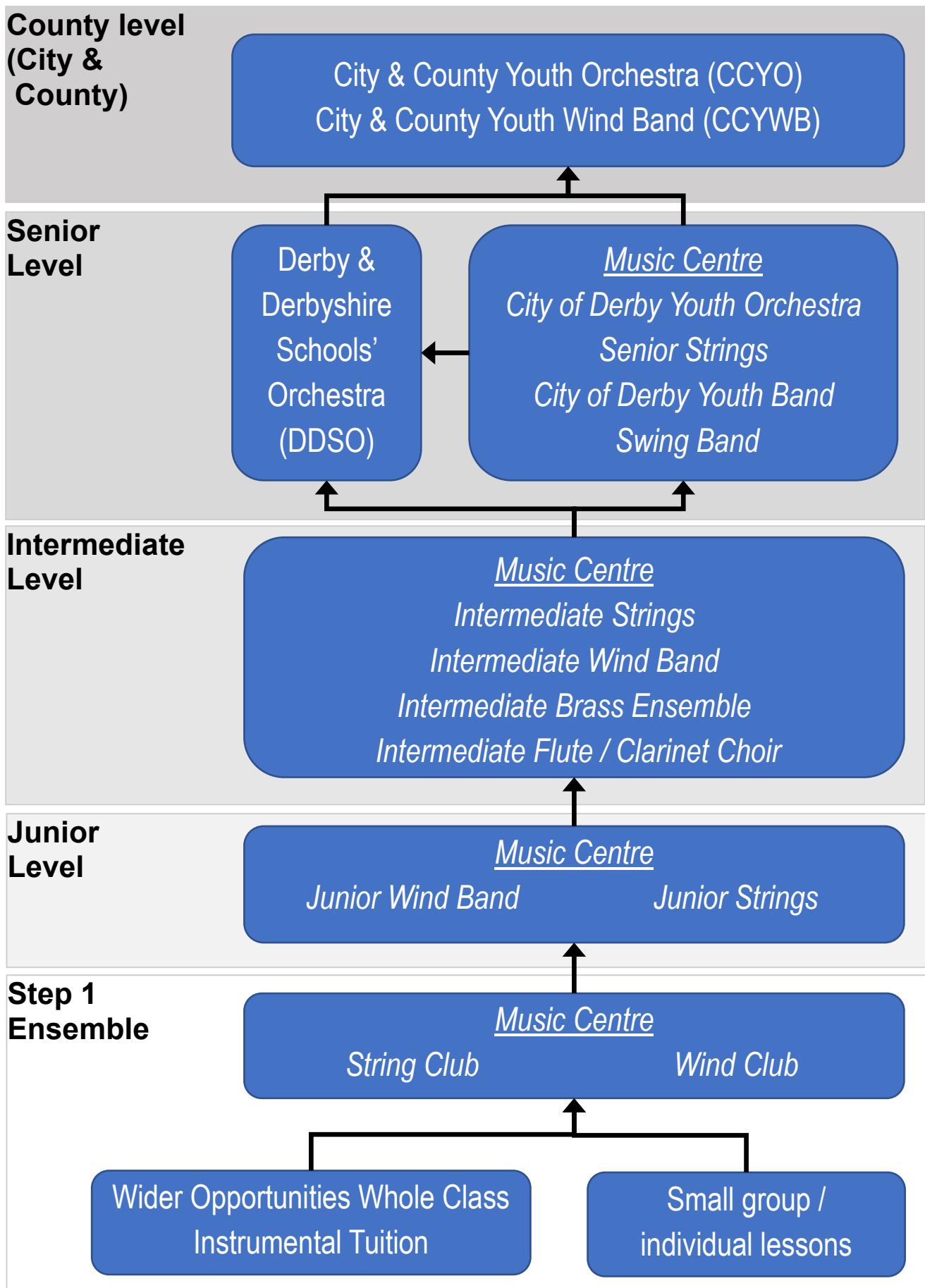
Finale – for all players

conducted by Vicky Keane

Hoe Down - Copland

Progression Pathway: Derby Music Centre

Derby & Derbyshire Music Partnership Ensembles



DMC students attend the following schools:

Allestree Woodlands School
Blessed Robert Sutton Catholic Sports College
Borrow Wood Primary School
Brailsford CofE Primary School
Brookfield Primary School (Derby)
Cavendish Close Infant School
Cavendish Close Junior School
Chellaston Academy
Chellaston Infant School
Chellaston Junior School
Cherry Tree Hill Primary School
Dale Community Primary School
Denstone College
Derby Cathedral School
Derby Grammar School
Derby High School
Derby UTC
Duffield Meadows Primary School
Emmanuel School
English Martyrs' Catholic Primary
Eureka Primary School
Field House Infant School
Firs Estate Primary School
Granville Sport College
Griffe Field Primary School
Highfields School
Hilton Primary School
Home Schooled
Homefields Primary School
John Port Spencer Academy
Kirk Langley CofE Primary School
Lady Manners School
Landau Forte College
Lawn Primary School
Lees Brook Community School
Linton Primary School
Little Eaton Primary School
Littleover Community School
Long Lane CofE Primary School
Longford CofE Primary School
Markeaton Primary School
Melbourne Junior School
Mickleover Primary School
Morley Primary School
Murray Park Community School
Nottingham Girls High School
Osmaston CofE (VC) Primary School (Ashbourne)
Parkview Primary School
Portway Junior School
Queen Elizabeth's Grammar School
Ravensdale Junior School
Redwood Primary School
Repton Primary School
Saint Benedict Catholic Voluntary Academy
Silverhill Primary School
St. George's Catholic Primary School (Littleover)
St. Joseph's Catholic Primary School (Derby)
St.Martin's School
Stenson Fields Primary Community School
Swanwick School and Sports College
The Curzon CofE Primary School
The Ecclesbourne School
Trent College
Turnditch CofE Primary School
Walter Evans CofE Aided Primary School
West Park School
William Gilbert Endowed CofE Primary School
Wren Park Primary School

We would like to thank the following people and businesses for their generous support:

Colin and Hilary Fielder
Adele Spencer

Sainsbury's

DC **DERBY CONCERT**
O **ORCHESTRA**



P M Corbett Ltd
Electricians
DOMESTIC • COMMERCIAL • INDUSTRIAL
Rewires, Earthing, Sockets, Lighting, Testing, Burgler Alarms
Patrick Corbett PDH, RQS
Director
7 Whitehouse Close, Shelton Lock, Derby, DE24 9QE
Tel: 01332 691733 Mobile: 07930 537904
Email: pniceic@aol.com



Mac's
OUTof School Care
Ofsted Registered, Professional Childcare in a safe environment.
Call – 07527 233 495 or email macsclub1@gmail.com



A huge thank you to everyone who has donated a raffle prize.

We would also like to extend a huge thank you to **Geraldine Curtis Photography** and anyone else who has helped or supported this event in any capacity.

Derby Music Centre is a Hub partner for the Derbyshire Music Education Hub. Thanks are also due to the Trustees, the conductors, all those who regularly support the Centre, and of course you, the parents, family and friends who continue to encourage and support your children.

To apply for county level ensembles, please go to www.derbyshiremusichub.org.uk and click on: **“Becoming a member of City & County ensembles”**

We are always interested to hear your views and hope that you will take time to send an e-mail or talk to us.

www.derbymusiccentre.com

info@derbymusiccentre.com

Facebook: [derbymusiccentre](https://www.facebook.com/derbymusiccentre)



www.derbyshiremusichub.org.uk

 Photography by

Geraldine Curtis Photography

<https://www.flickr.com/photos/geraldinecurtis/>

